

Southdown Genetics: Callipyge Mutation

Directions: Select a Southdown ram and ewe from below. Fill out the Punnett square to predict the possible gene combinations from the ram and ewe mating. Determine if the mating will result in lambs that express the callipyge mutation, carry the mutation (but does not look callipyge), or are normal (do not carry the callipyge mutation).

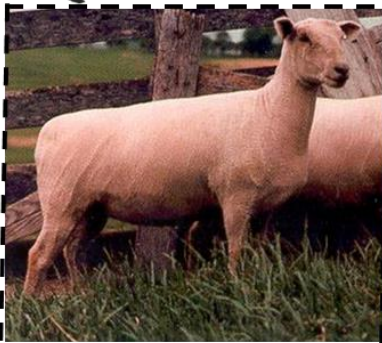
_____ % Callipyge

_____ % Carry callipyge mutation gene
but does not look callipyge

_____ % Normal, do not carry the
callipyge mutation



Select A Southdown Ewe



clpg/clpg



CLPG/clpg



clpg/CLPG



CLPG/CLPG



Select A Southdown Ram



clpg/clpg



CLPG/clpg



clpg/CLPG



CLPG/CLPG